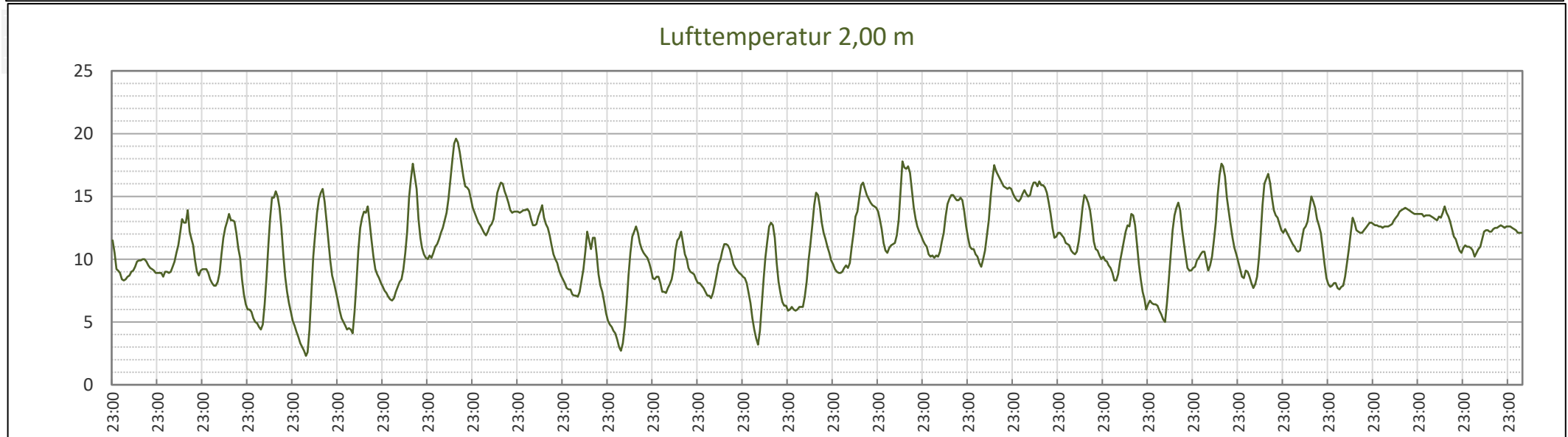
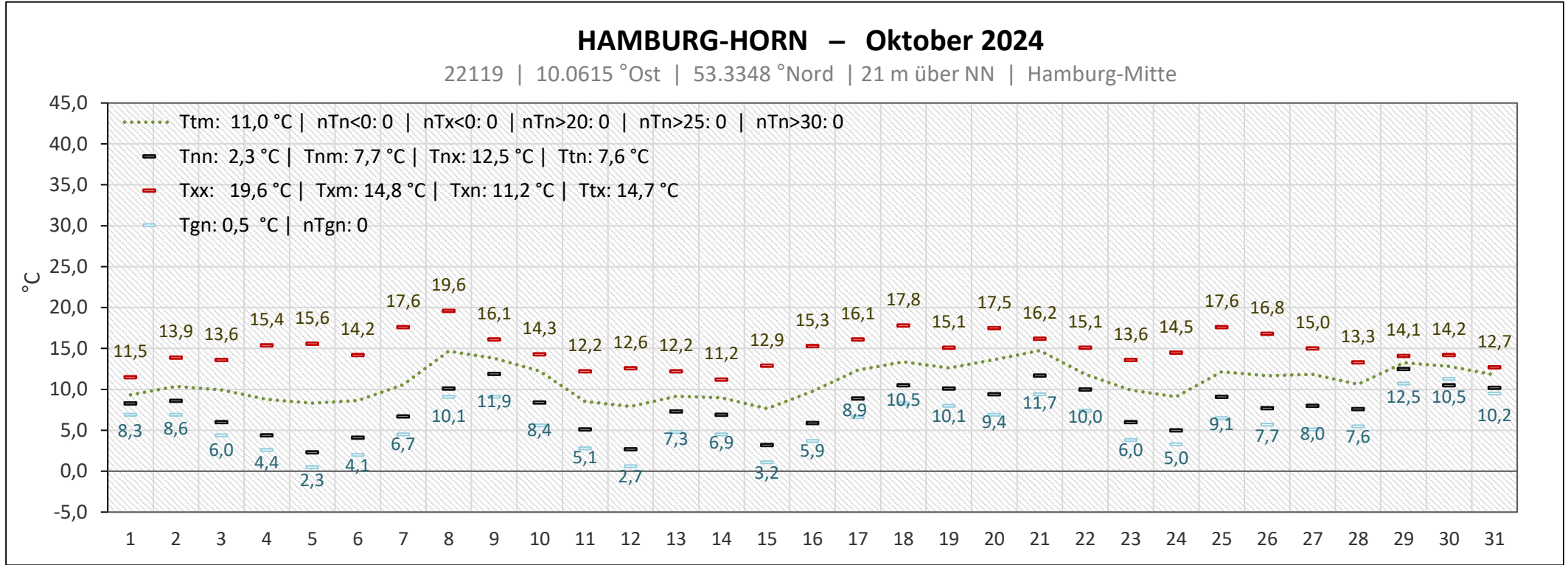
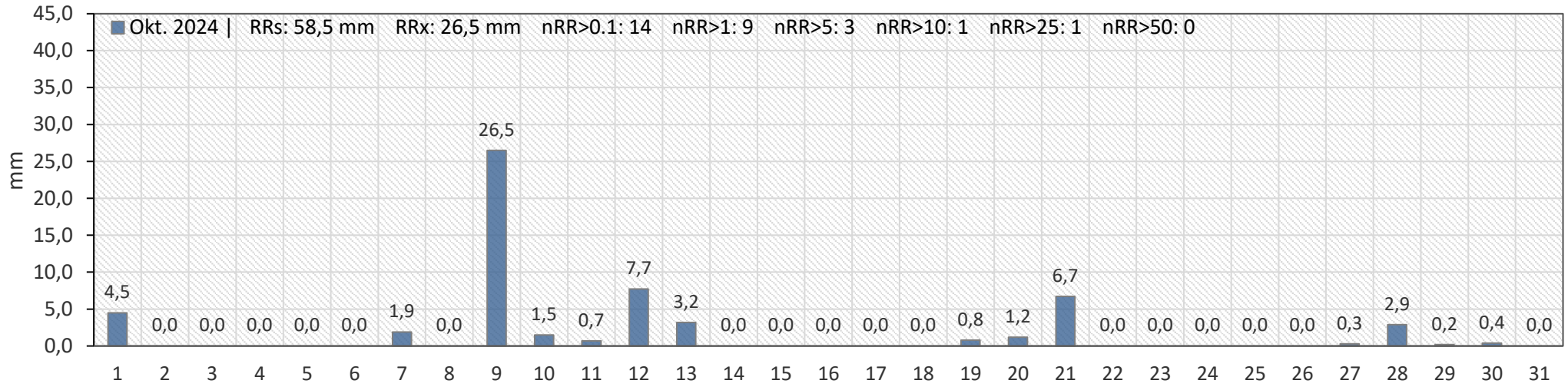


Diagramm der Lufttemperatur in 2,00 m, gelegentlich auch in 0,05 m über dem Erdboden.

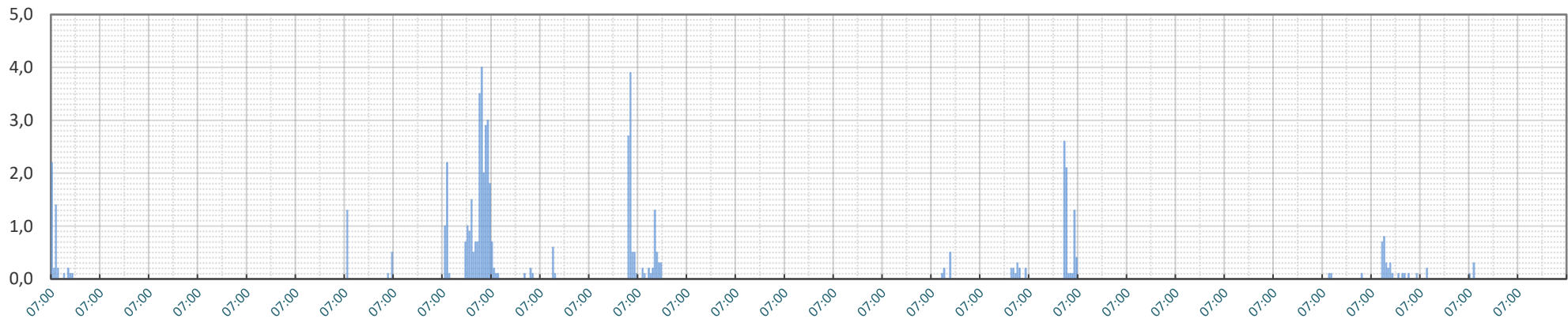


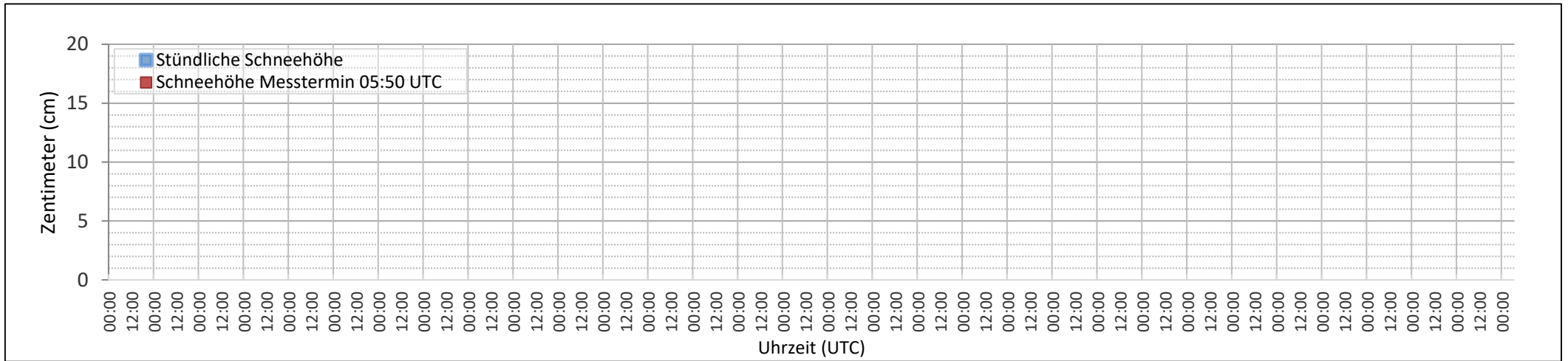
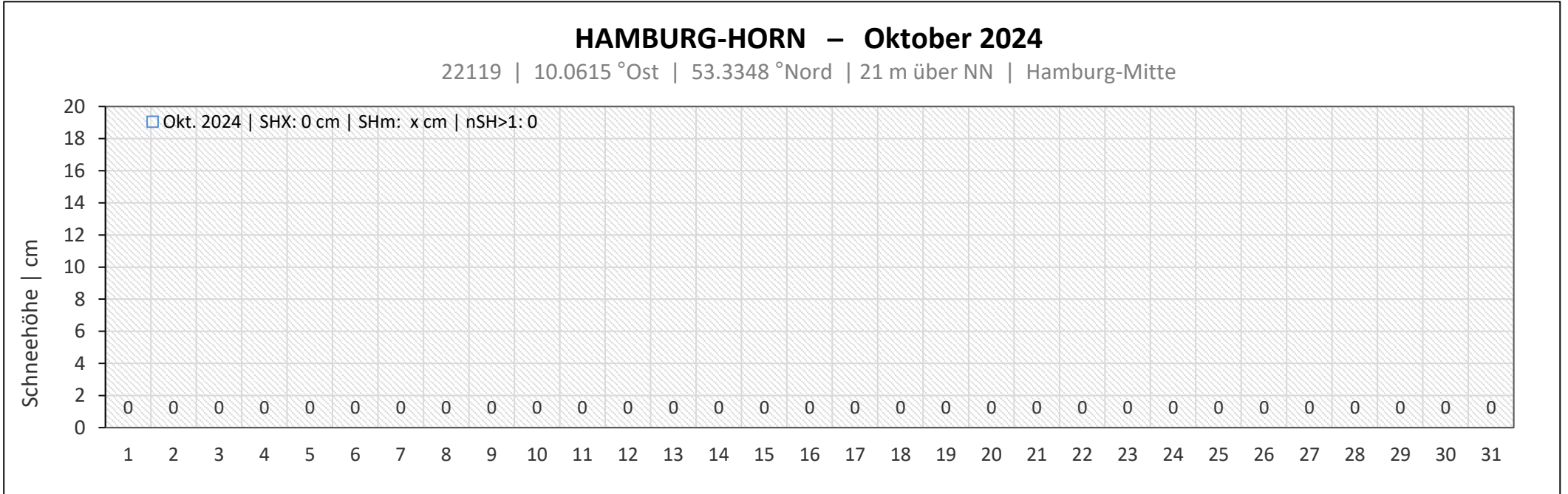
HAMBURG-HORN – Oktober 2024

22119 | 10.0615 °Ost | 53.3348 °Nord | 21 m über NN | Hamburg-Mitte



Niederschlag mm/1h

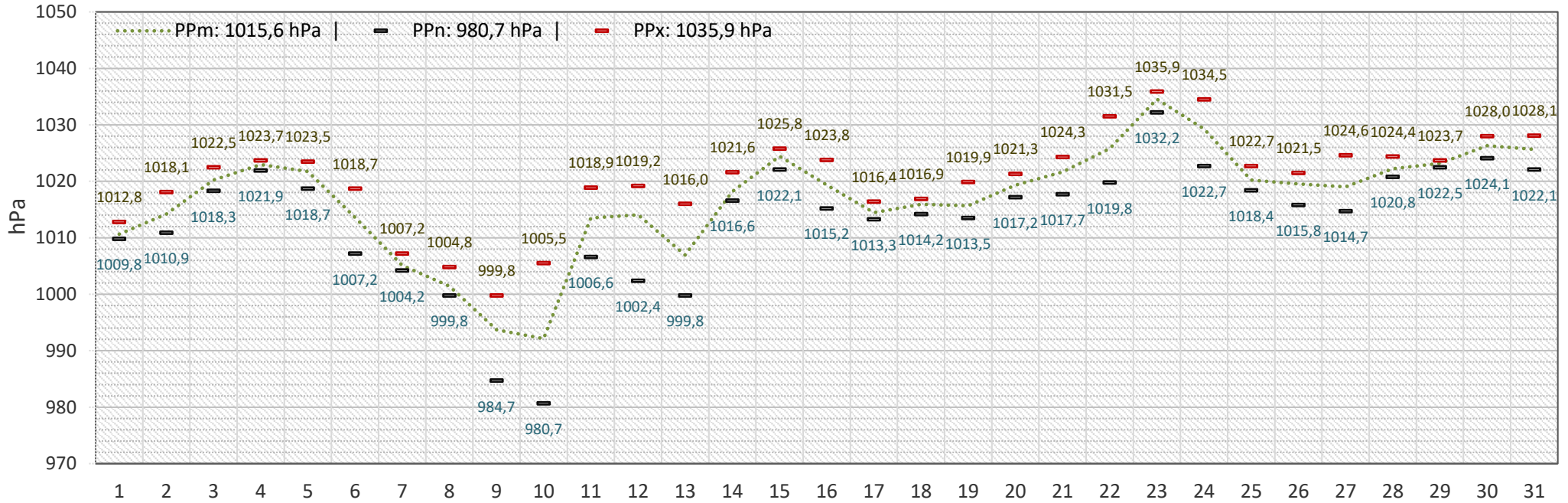




Luftdruck auf Stationshöhe [21m über NN]

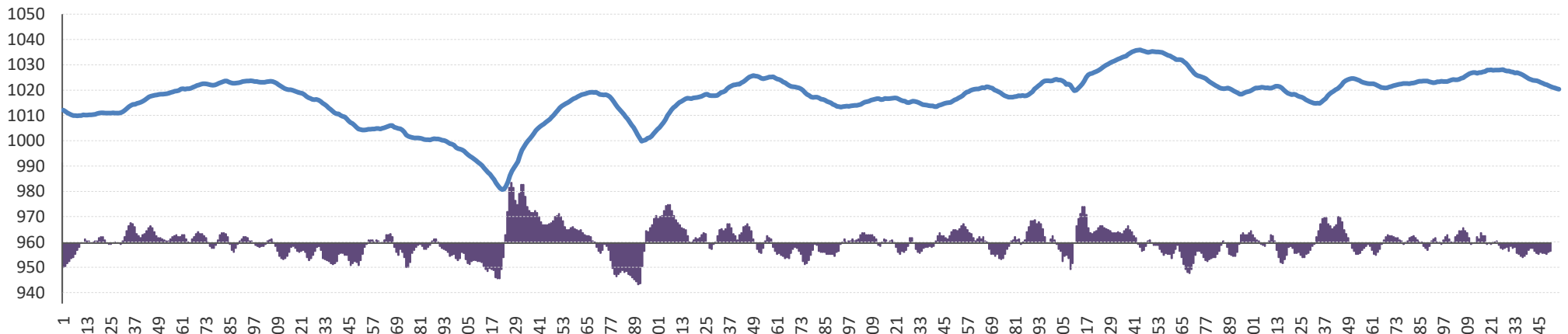
HAMBURG-HORN – Oktober 2024

22119 | 10.0615 °Ost | 53.3348 °Nord | 21 m über NN | Hamburg-Mitte



Luftdruck Tendenz -3h

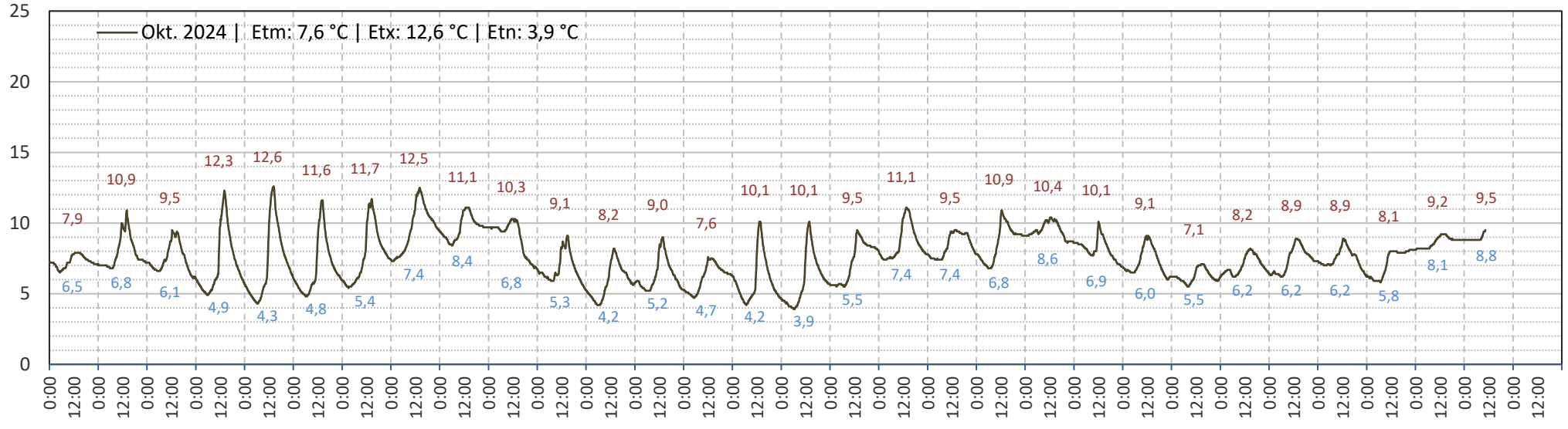
hPa



Erdbodentemperaturverlauf in -0,05 m | unbewachsenen Erdboden

HAMBURG-HORN – Oktober 2024

22119 | 10.0615 °Ost | 53.3348 °Nord | 21 m über NN | Hamburg-Mitte



Etm: 7,6 °C	Etx: 12,6 °C	Etn: 3,9 °C
-------------	--------------	-------------

Hinweis:

Wegen einen Problem mit der Verbindung von den Sensoren zum Server, entfallen einige Daten vorerst.

Stand: 30.10.2024 10:30 UTC